



# MINERVA NEWSLETTER 8

26th April 2024

Welcome to the beginning of another new term. It has been a fantastic start with more children learning outside in our developing nature area, embracing opportunities to be active in our local community litter picking and learning to cycle on the pump track and enjoying trips that enhance learning.

Our weekly activities in the community as **Minerva Global Citizens** has been recognised and we have been given a Hillfields Hero Award. The city-wide climate action project organisers stated that 'We love what you and the children at Minerva Academy do! It's brilliant to see the next generation getting involved, taking positive action and helping keep the area clean as well as protecting local wildlife.' We want everyone at Minerva to develop a sense of belonging and be proud of their community demonstrating they are **Safe, Respectful and Learning** in and out of school.

Another highlight over the last two weeks for the senior team, has been going into every class to see learning. Children are actively engaged, working collaboratively, applying new vocabulary and content both orally and in written work to complete learning they are proud of. It is always amazing to see the progress children make through the year. We have already awarded several children some of our new **Effective Lifelog Learning Inventory** certificates. They must collect all seven to receive the special certificate and prize. This may take a long time but is another way children show their resilience not to give up and self-agency.

Wishing everyone a lovely weekend

Jenny Harvey

Principal

## RECEPTION WESTONBIRT ARBORETUM

On Wednesday 27<sup>th</sup> March, Reception children visited Westonbirt Arboretum. The children were very excited to go on the coach and enjoyed making observations and singing on the journey. When we arrived at Westonbirt, we had the opportunity to explore the beautiful grounds, learn about different trees and different types of plants. One of the activities involved making a nest for a bird. We used our ELLI power of the Bee, to work together to collect natural resources to create the nests. We then tested the nests by placing an egg in the middle and everyone did a great job. Reception very much enjoyed learning new games and the very exciting egg hunt at the end. The children had a wonderful time and demonstrated our MPA values of Safe, Respectful Learning throughout. Thank you to the wonderful team at Westonbirt Arboretum for such a fantastic day!



## YEAR 4 WILDPLACE PROJECT

In Year 4 we visited Wildplace to prepare us for our Scientists unit on classification. We explored the park and saw lots of different types of animals including giraffes and bears! We also had an 'animal detectives' workshop where we learnt how to classify different animals. We had lots of clues to try and work out which animal had broken into the park. We were able to use our detective's skill to help us. Visiting Wildplace has really helped us to plan and write our Scientists information text all about classification.



### EARTH DAY– 22ND APRIL 2024

This year the focus is on our use of plastics and the goal is to have 60% reduction in plastic production by 2040.

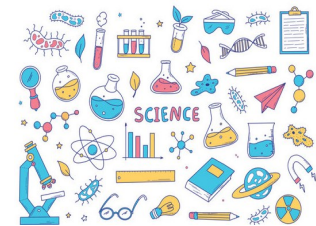
## Planet vs. Plastics

On Monday we had a whole class assembly where pupils were very engaged and wanted to ensure that we all use reusable water bottles, and we avoid single use packaging. The pupils also highlighted that they wanted us all to think about how much plastic we use in packed lunch boxes.

In school we are regularly completing litter picks, planting seeds, and recycling in our classes! Well done team MPA!

### WE ARE SCIENTISTS

This term we are working as scientists and citizens to improve the biodiversity of our school. We will be planting and growing a range of flowers and vegetables. Use your scientific skill of observation to see if you can spot any seasonal changes as we move into summer.



### MINERVA GLOBAL CITIZEN RELATIONSHIPS



**Healthy relationships** are crucial to living a happy life, and that includes positive peer relationships, safe online interactions, relationships with different adults in school and at home and those within our local community. This puzzle will help students understand the value of friendship and family. It will also teach them conflict resolution and communication skills to help when navigating through the adult world.

Learning is progressive and age appropriate from reception to year 6. This unit teaches children the essential building blocks and characteristics of positive relationships. We believe that children should learn about relationships as well as the emotional, social and physical aspects of growing up in an age-appropriate way. The unit provides lots of opportunity for our children to practise and demonstrate the *Effective Lifelong Learning Inventory* skill of learner relationships (bee).



## ELLI REWARD CARDS

At Minerva we use ELLI (Effective Lifelong Learning Inventory) as a way to help children think and talk about themselves as learners. It supports them to know what they do well and how can they get even better at being a successful and independent learner.

Recently the Pupil Council came up with ideas to help us improve our understanding of ELLI. One of these ideas was an ELLI scavenger hunt which every class took part in last week. Another idea from the Pupil Council was to have individual ELLI certificates for the children to collect. Last week we introduced these, and children have already started collecting them. These individual ELLI certificates are handed out by any adult in the school and need to be kept safe by the child. Once a child has earned a certificate for each of the seven ELLI powers, they can share them with a member of the Senior Leadership Team and earn a bigger certificate and a prize. We look forward to seeing the children grow their ELLI powers as they challenge themselves to collect all seven.

## PARENT SURVEY APRIL 2024

Throughout the school year we like to survey parents and carers to find out what we are doing well and how we could improve. Your feedback is really valuable and helps us to make changes to benefit our whole school community. Following on from the survey in October we:

- Have held termly parent forums with a focus on communication between school and families, Enrichment of the curriculum both in school and out in the community and provision for SEND.
- Have also held additional parent workshops, such as Anti-bullying, Year 6 SATs and Year 1 phonics screener.
- Reviewed communication accuracy, frequency and need. We now include a subject line in all emails, so it is easier to recognise what the email is about. We have a Friday email to detail what is coming up. We have reduced the amount of whole school texts and emails by using specific groups to target the right families.
- Have written and published a communication policy that has been shared. This can be seen on the website.
- Have updated the SEND information report to detail the SEND offer at MPA. This can be seen on the website.

Have ensured that knowledge organisers are provided in paper and transported home using the reading folders.

We would really appreciate your time and feedback so we can make further improvements before the end of the school year. If you would like to complete a paper copy, please collect from the school office.

## DATES FOR YOUR DIARY

<b>Wednesday 8th May</b>	Class photos – All students to wear uniform.
<b>Thursday 16th May</b>	Menu change – more information to follow.
<b>Friday 17th May</b>	Friends of Minerva Ice lolly sale in main playground from 3.15pm.
<b>Wednesday 22nd May 9.15am—10.30am</b>	Pre-school & Reception Sports day.
<b>Thursday 23rd May 9.15am—10.45am</b>	Sports day for years 3,4,5 & 6. More details to follow.
<b>Thursday 23rd May 1.45pm—3.00pm</b>	Sports day for years 1 & 2. More details to follow .